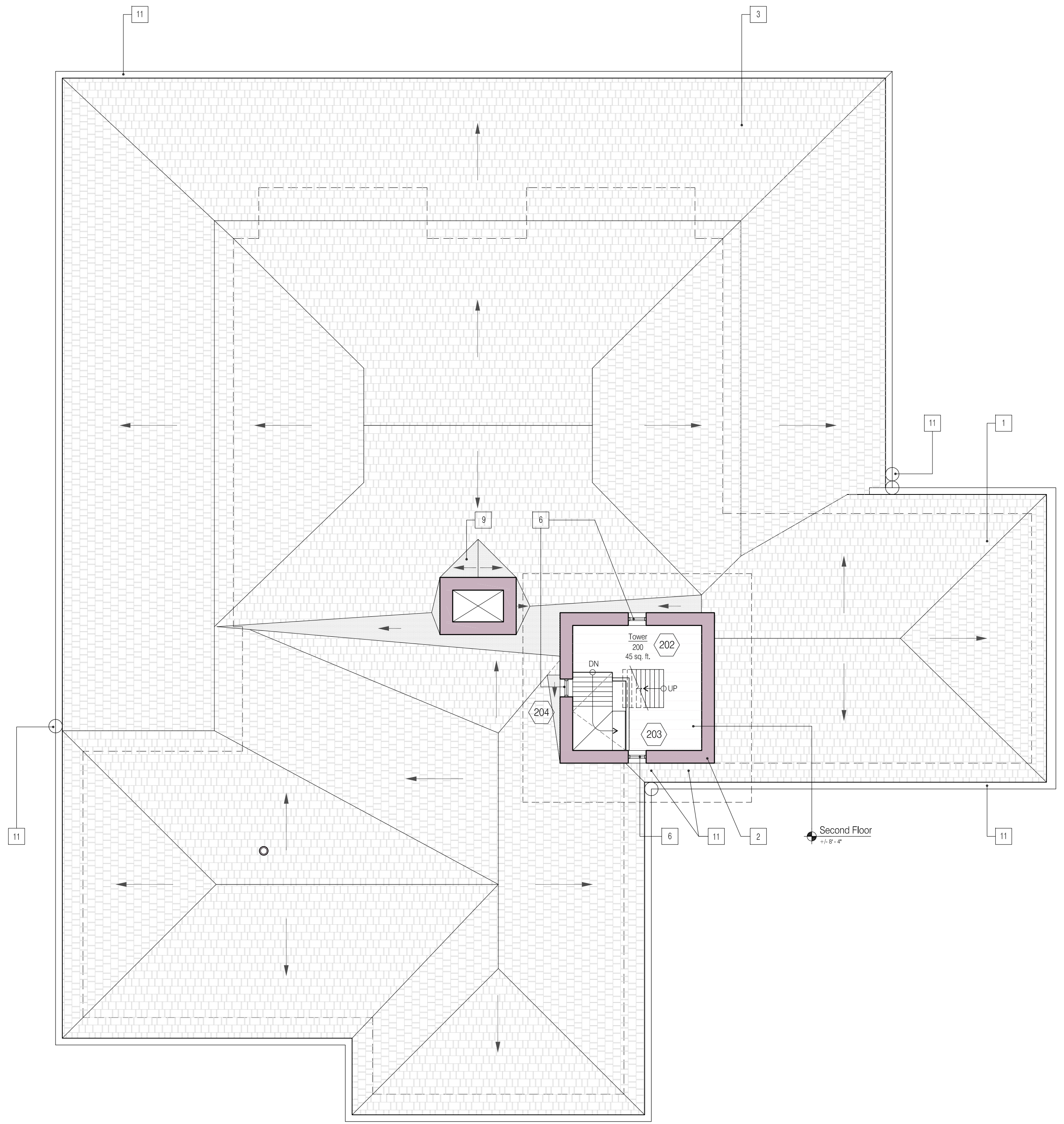
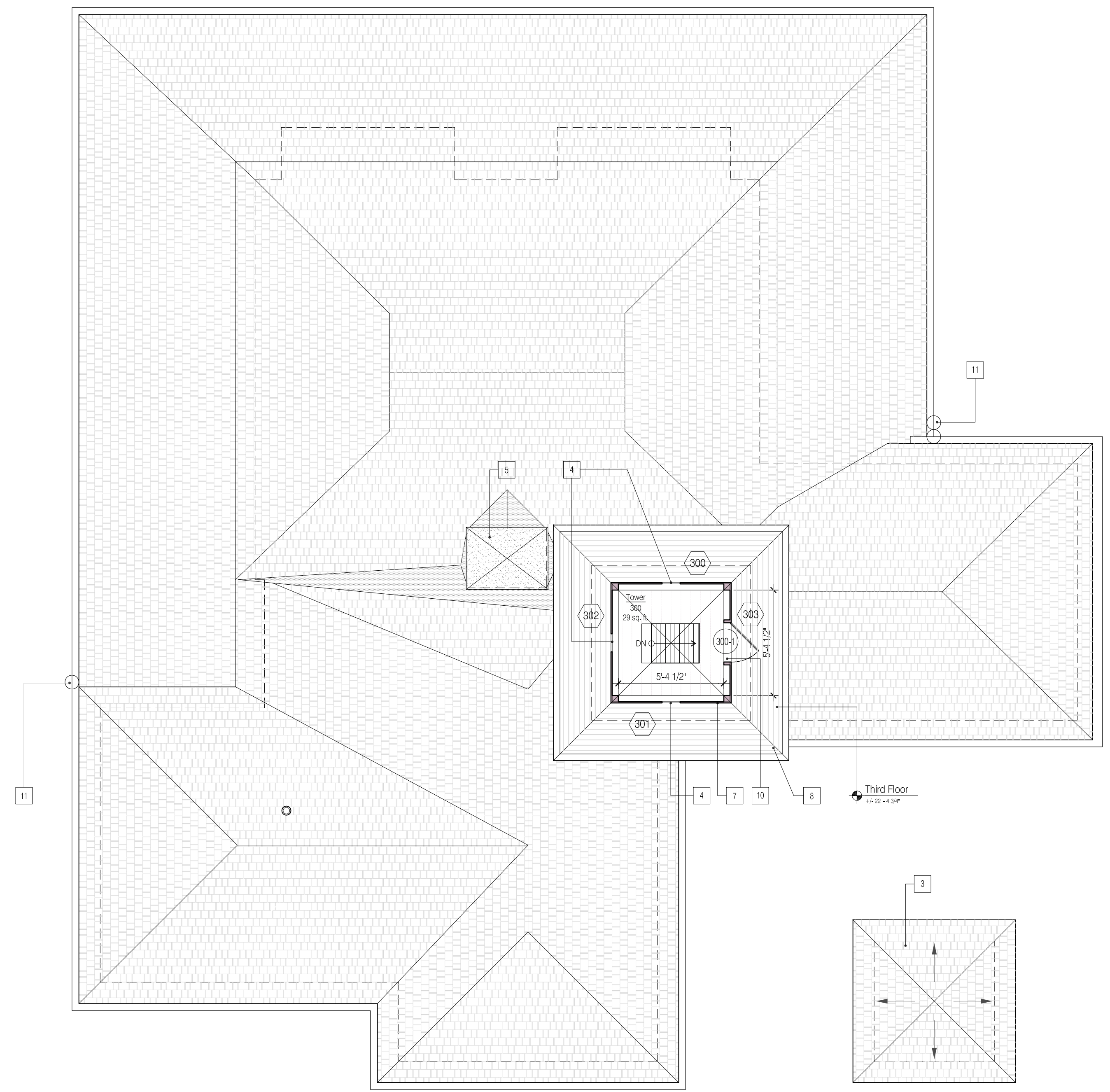


1 2 3 4 5 6 7 8 9 10

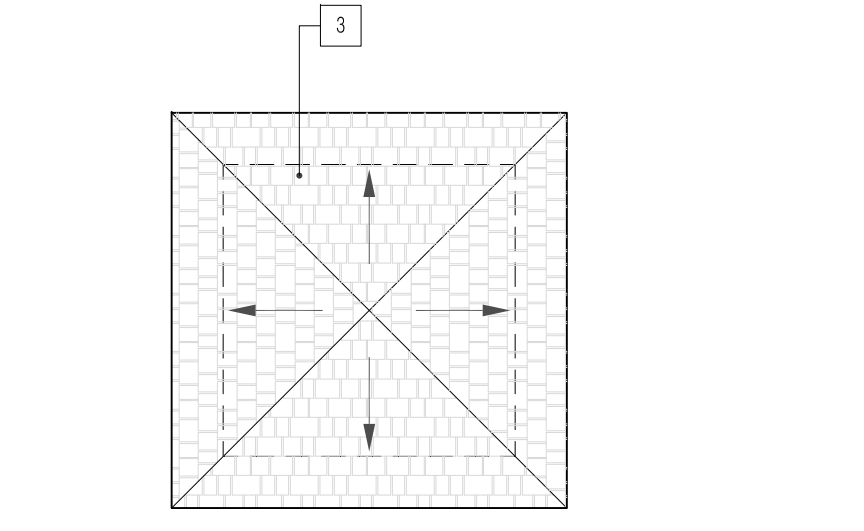
A  
B  
C  
D  
E  
F  
G  
H



**H1** TOWER SECOND FLOOR PLAN 1/4" = 1'-0"

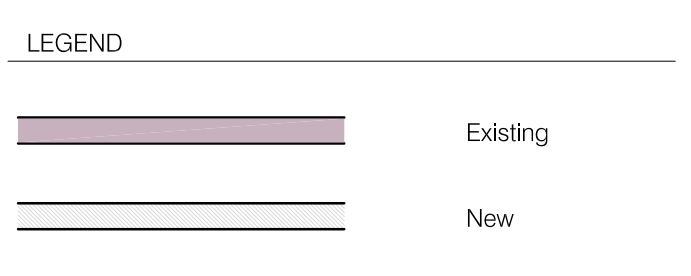


**H6** TOWER THIRD FLOOR PLAN 1/4" = 1'-0"



**H6** TOWER ROOF PLAN 1/4" = 1'-0"

- NOTES**
- 1 New hipped gable roof
  - 2 Existing board and batten siding to be repainted. See specifications.
  - 3 New cedar roofing. See specifications.
  - 4 Restore existing port hole windows.
  - 5 New cast concrete chimney cap. See detail.
  - 6 New lattice window. To match existing
  - 7 Existing log siding to be repainted. See specifications.
  - 8 New cedar decking, posts and balustrade
  - 9 New chimney flashing. See specifications.
  - 10 Replace door with new porthole window
  - 11 New copper gutter & downspout



**ANDRE TCHELISTCHEFF ARCHITECTS**  
 560 Broadway Suite 609 New York NY 10012  
 Telephone 212 431 1503 Fax 212 431 1506

1. Issued for Board Review 02/07/12
2. Revised 04/18/12

Smith - Taylor Cabin  
 Taylor's Island  
 Town of Shelter Island, New York

Second Floor & Third Floor  
 Design plans

Project # 11ST10	A1.1
Scale: 1/4" = 1'-0"	
7 December 2011	

