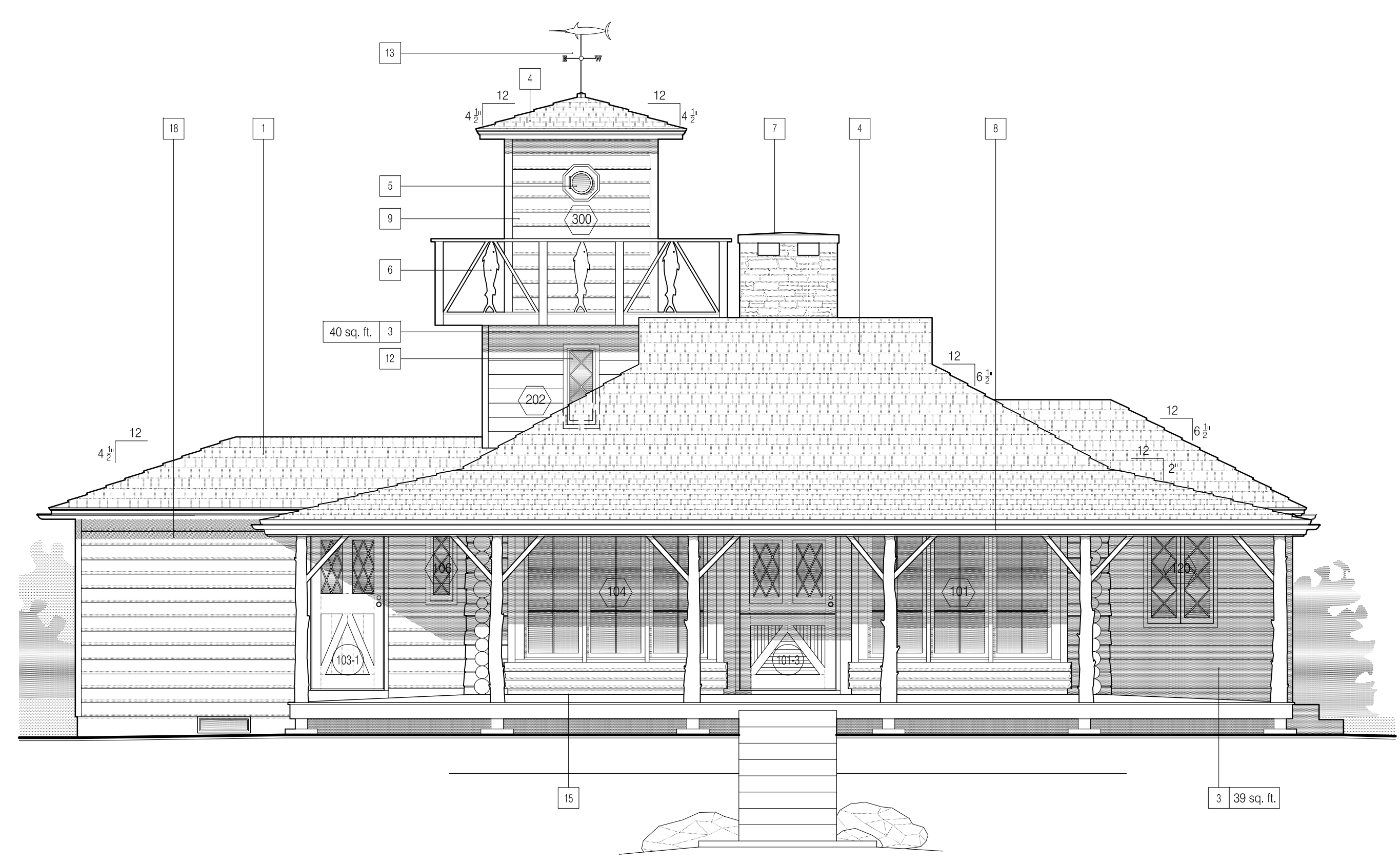
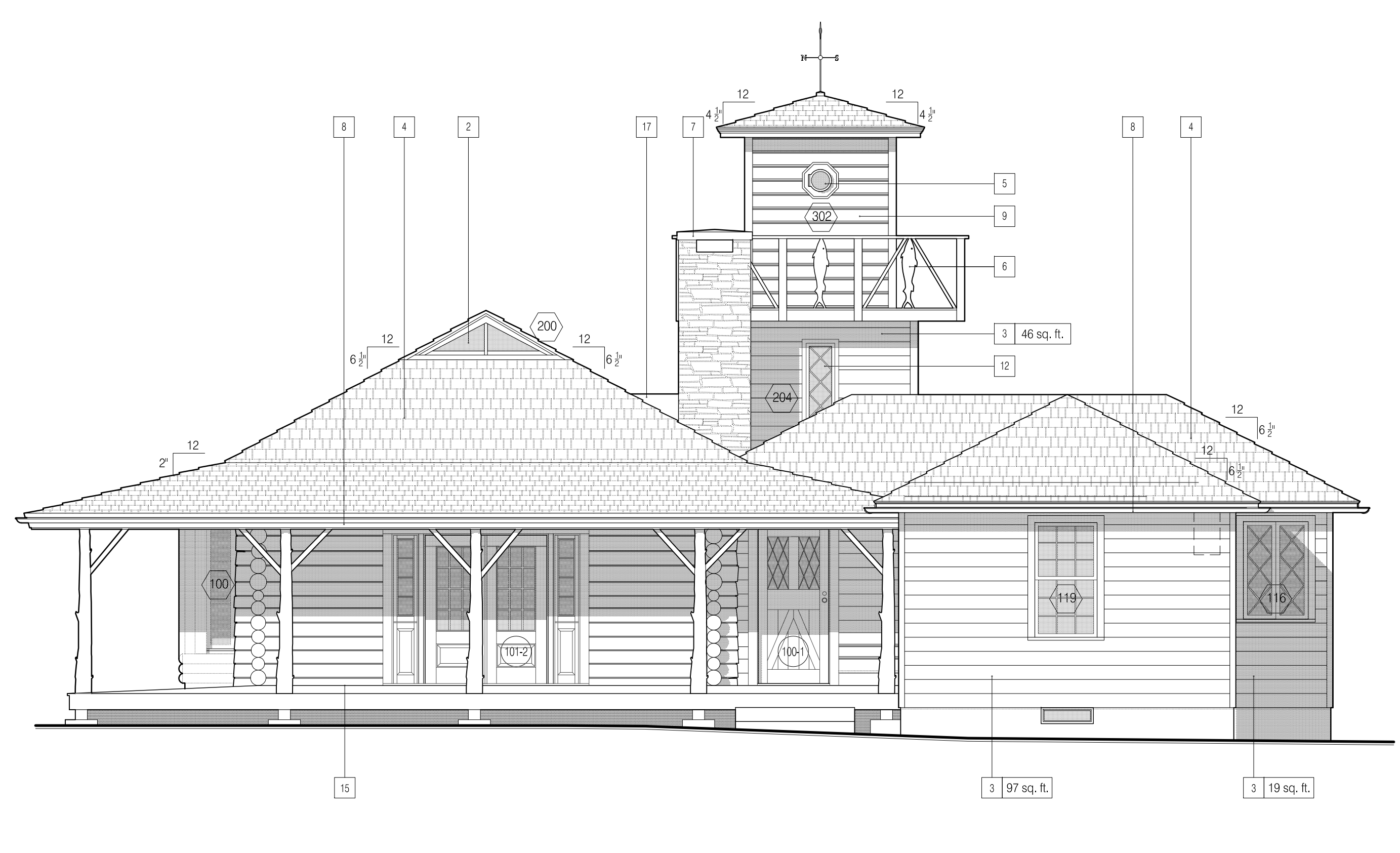


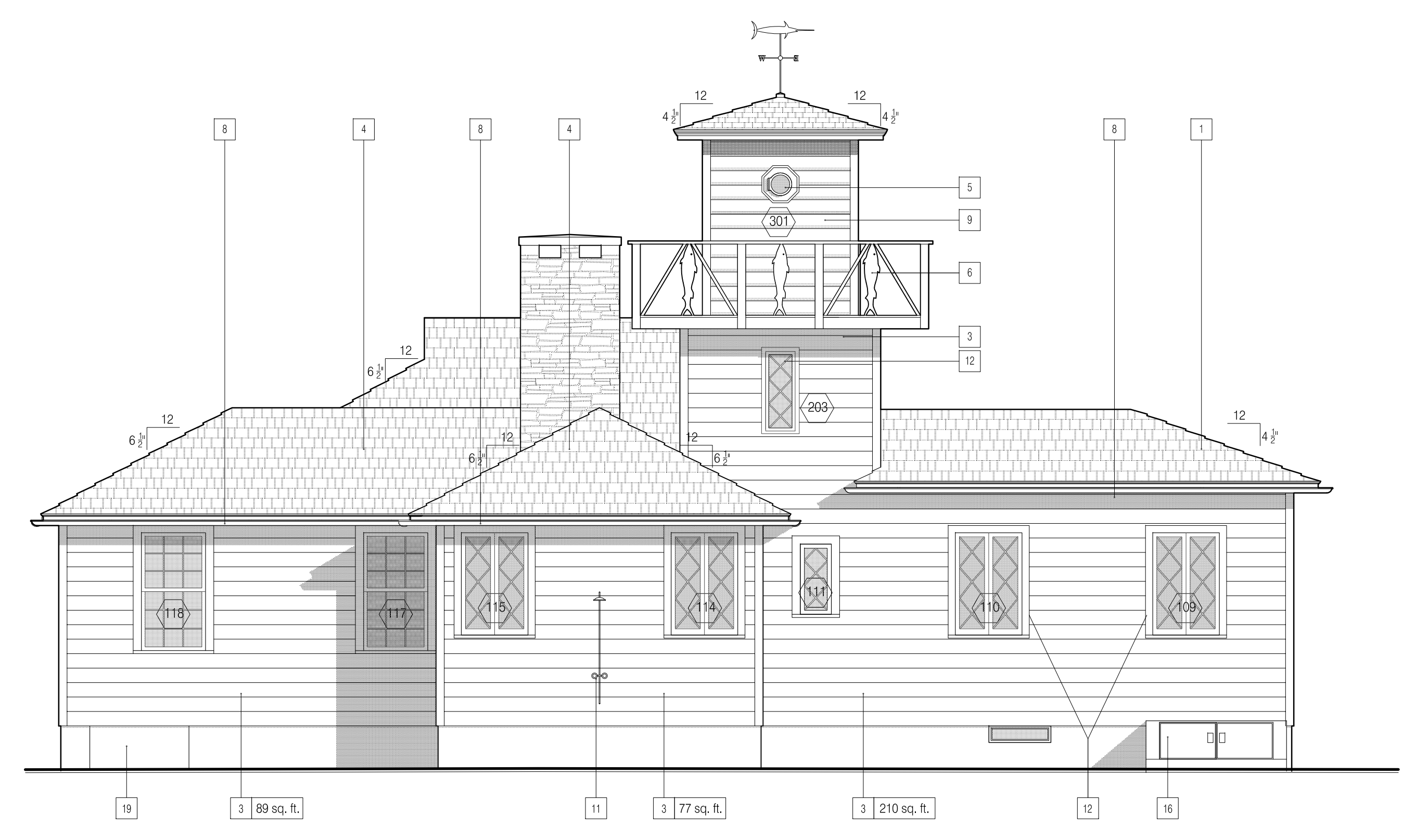
- 1 New hipped gable roof
- 2 New fixed window
- 3 New faux log siding to match existing (Approx. 870 sq. ft.)
- 4 New cedar roofing
- 5 Restore porthole window
- 6 New fish profile and balustrade to match previously existing. See detail.
- 7 New cast concrete chimney cap. See detail.
- 8 New copper gutter. See specifications
- 9 Replace siding as necessary
- 10 New log wall to match existing
- 11 New shower head & body
- 12 New lattice window
- 13 Restore existing weather vane. See specifications.
- 14 New door with porthole window
- 15 Existing decking to remain
- 16 Repair existing bulkhead doors
- 17 New flashing and crickets. See specifications.
- 18 Existing log siding to be repainted. See specifications.
- 19 Hatch to crawl space



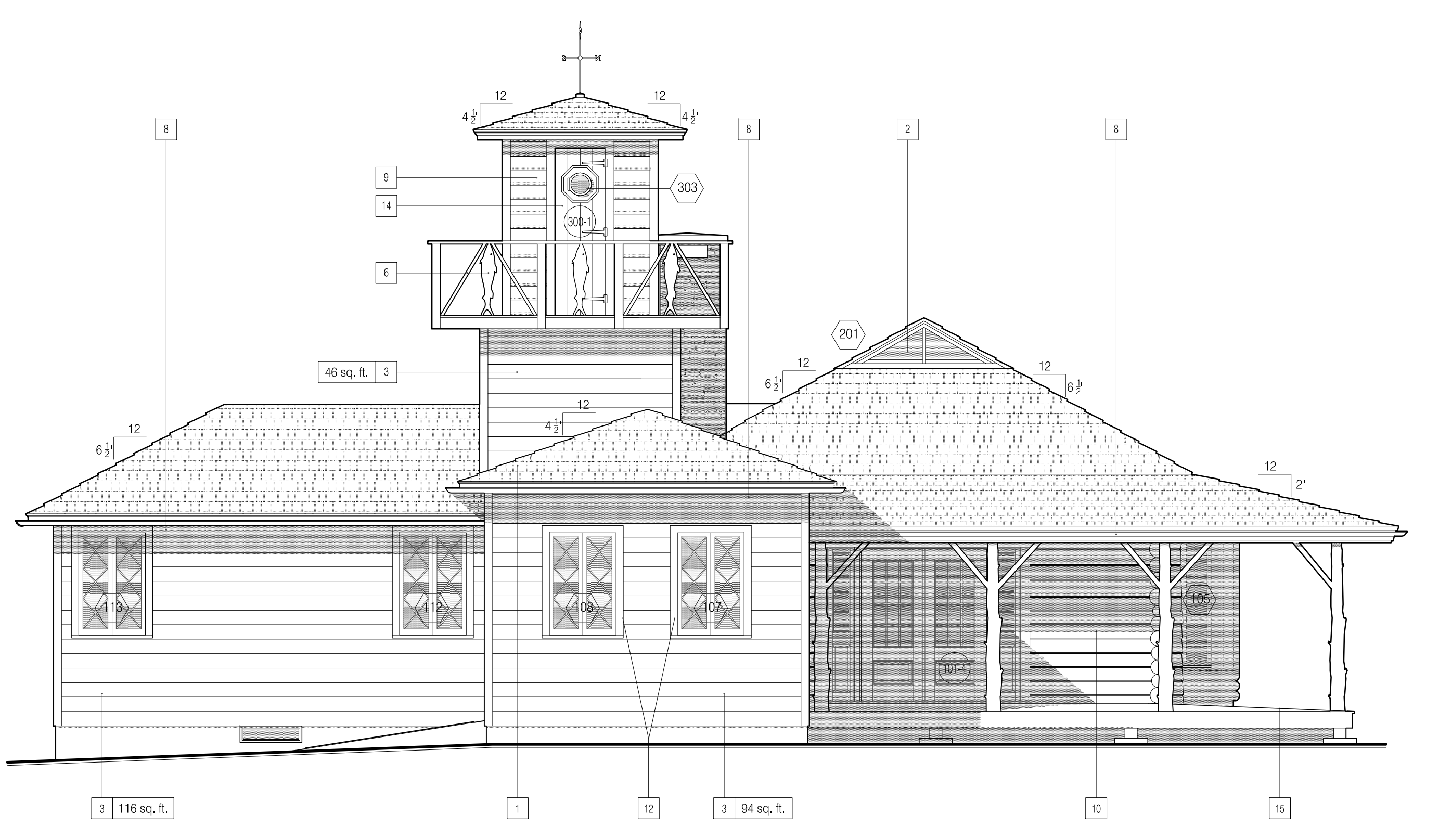
C1 NORTH ELEVATION 1/4"=1'-0"



C6 WEST ELEVATION 1/4"=1'-0"



G1 SOUTH ELEVATION 1/4"=1'-0"



G6 EAST ELEVATION 1/4"=1'-0"

ANDRE TCHELISTCHEFF ARCHITECTS
 560 Broadway Suite 609 New York NY 10012
 Telephone 212 431 1503 Fax 212 431 1506

- 1. Issued for Board Review 02/07/12
- 2. Revised 02/23/12

Smith - Taylor Cabin Taylor's Island Town of Shelter Island, New York	
Exterior Elevations Proposed - Option B	
Project # 11ST10	A2.1
Scale: 1/4" = 1'-0"	
7 December 2011	