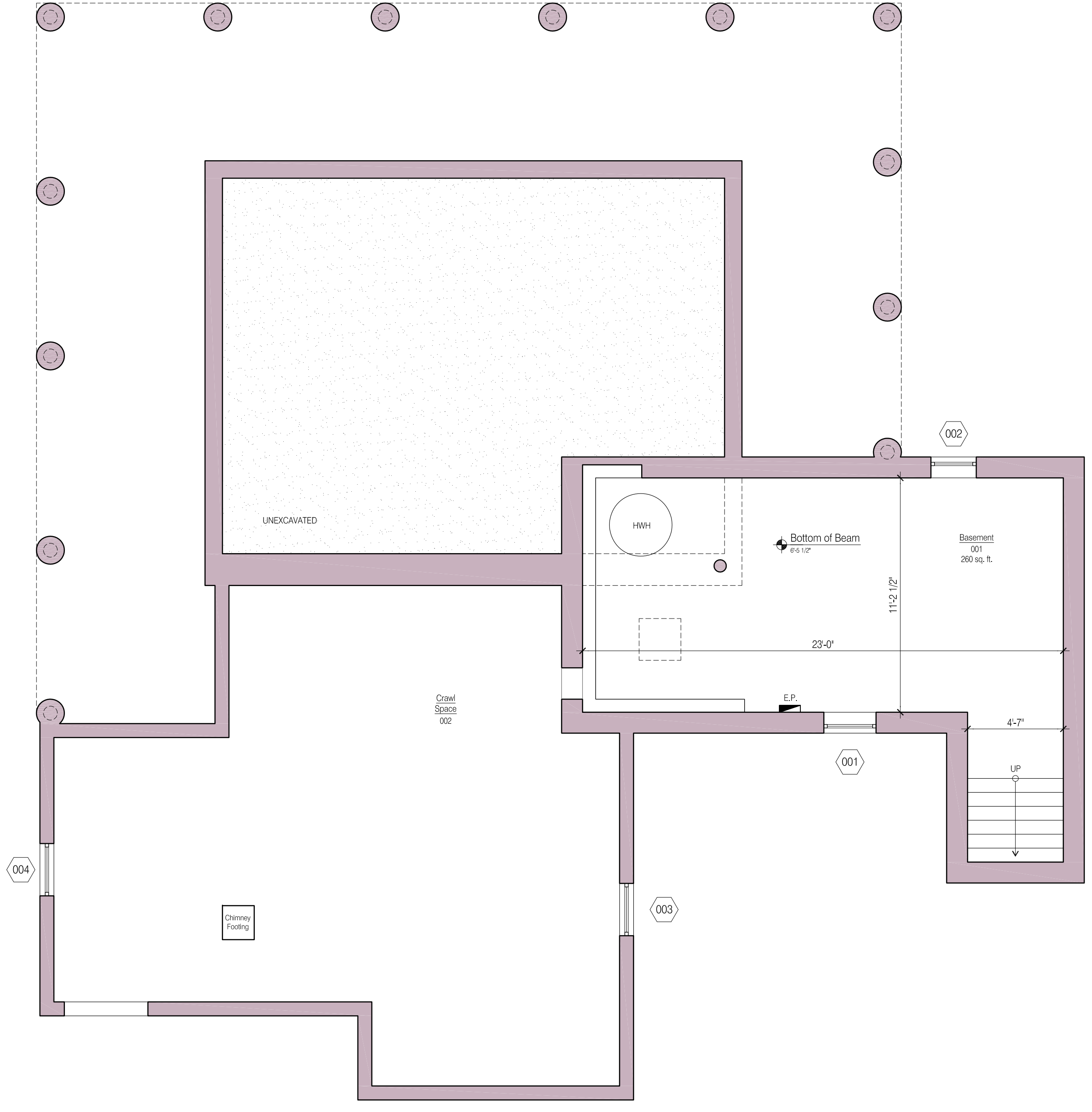
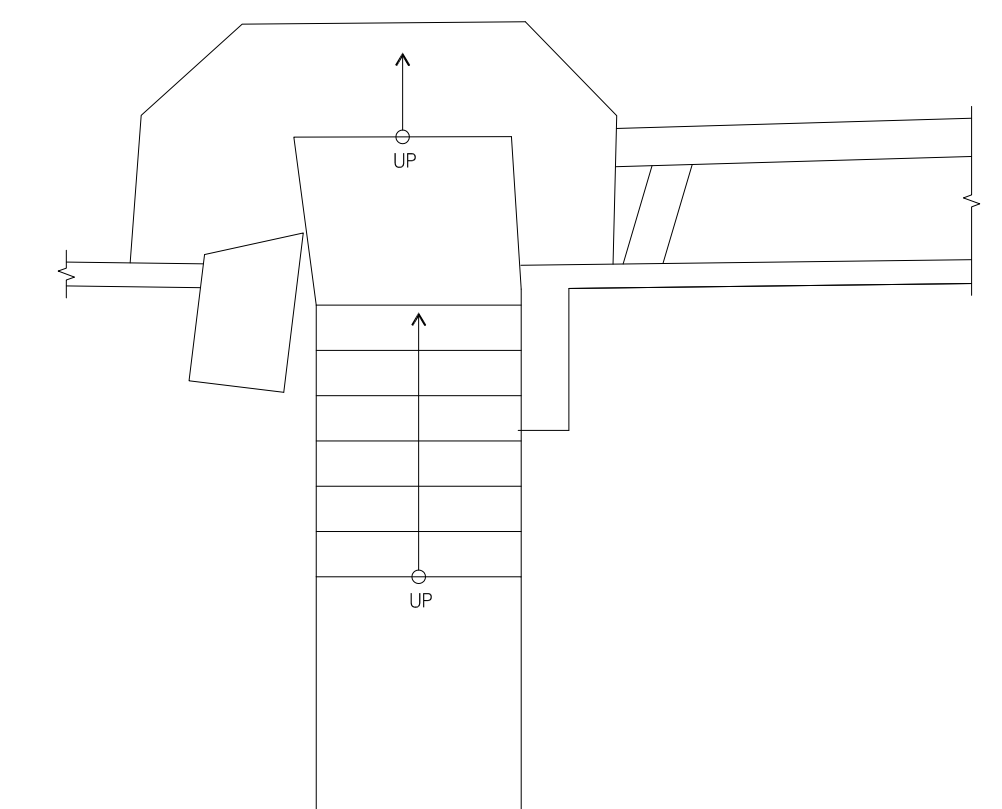
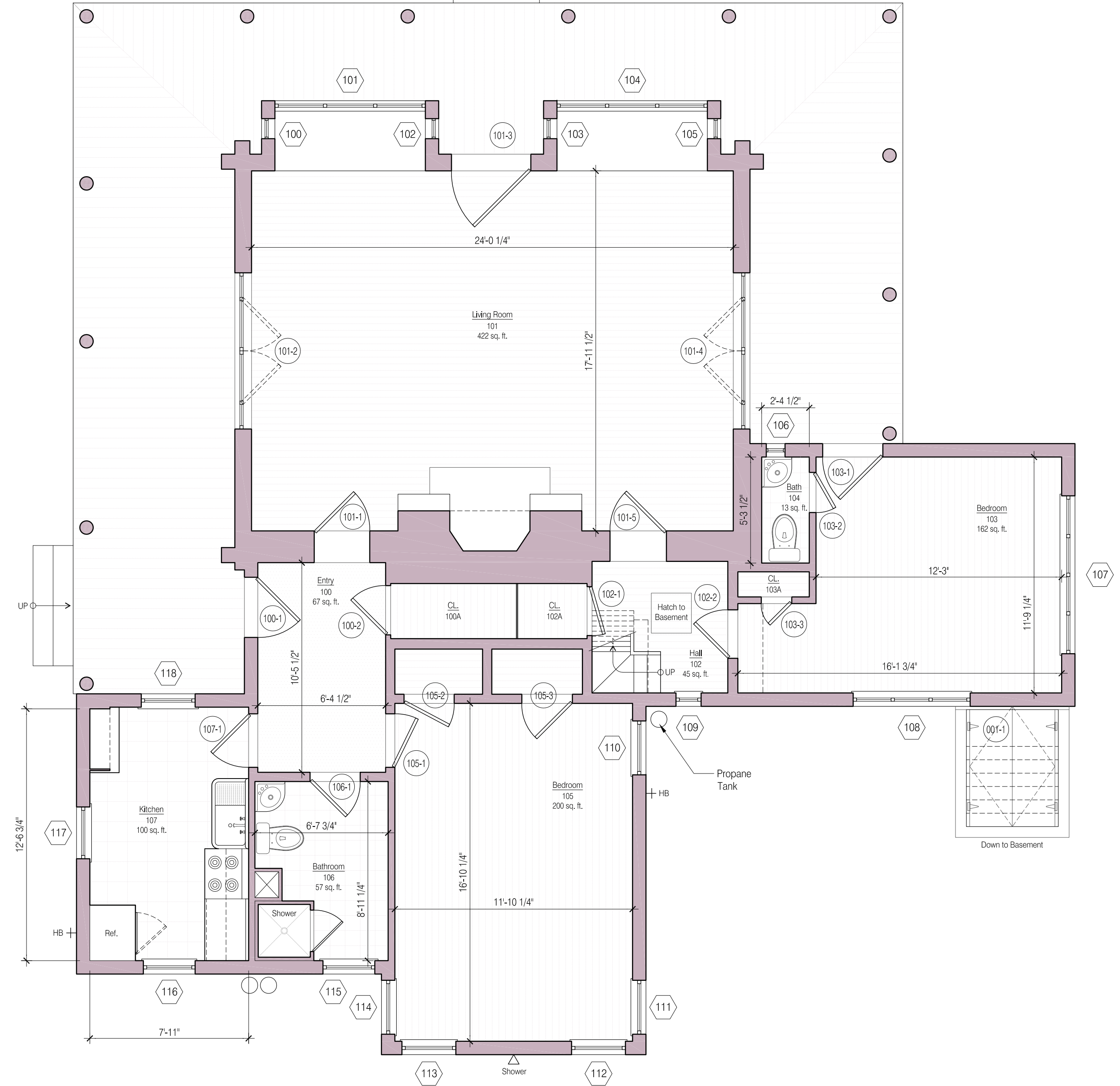


1 2 3 4 5 6 7 8 9 10

A
B
C
D
E
F
G
H



H1 BASEMENT PLAN 1/4" = 1'-0"



H6 FIRST FLOOR PLAN 1/4" = 1'-0"

ANDRE TCHELISTCHEFF ARCHITECTS
560 Broadway Suite 609 New York NY 10012
Telephone 212 431 1503 Fax 212 431 1506

1. Issued for Board Review 02/07/12

Smith - Taylor Cabin Taylor's Island Town of Shelter Island, New York	
Basement & First Floor Existing Plans	
Project # 11ST10	EX1.0
Scale: 1/4" = 1'-0"	
7 December 2011	

