

1 2 3 4 5 6 7 8 9 10

A

B

C

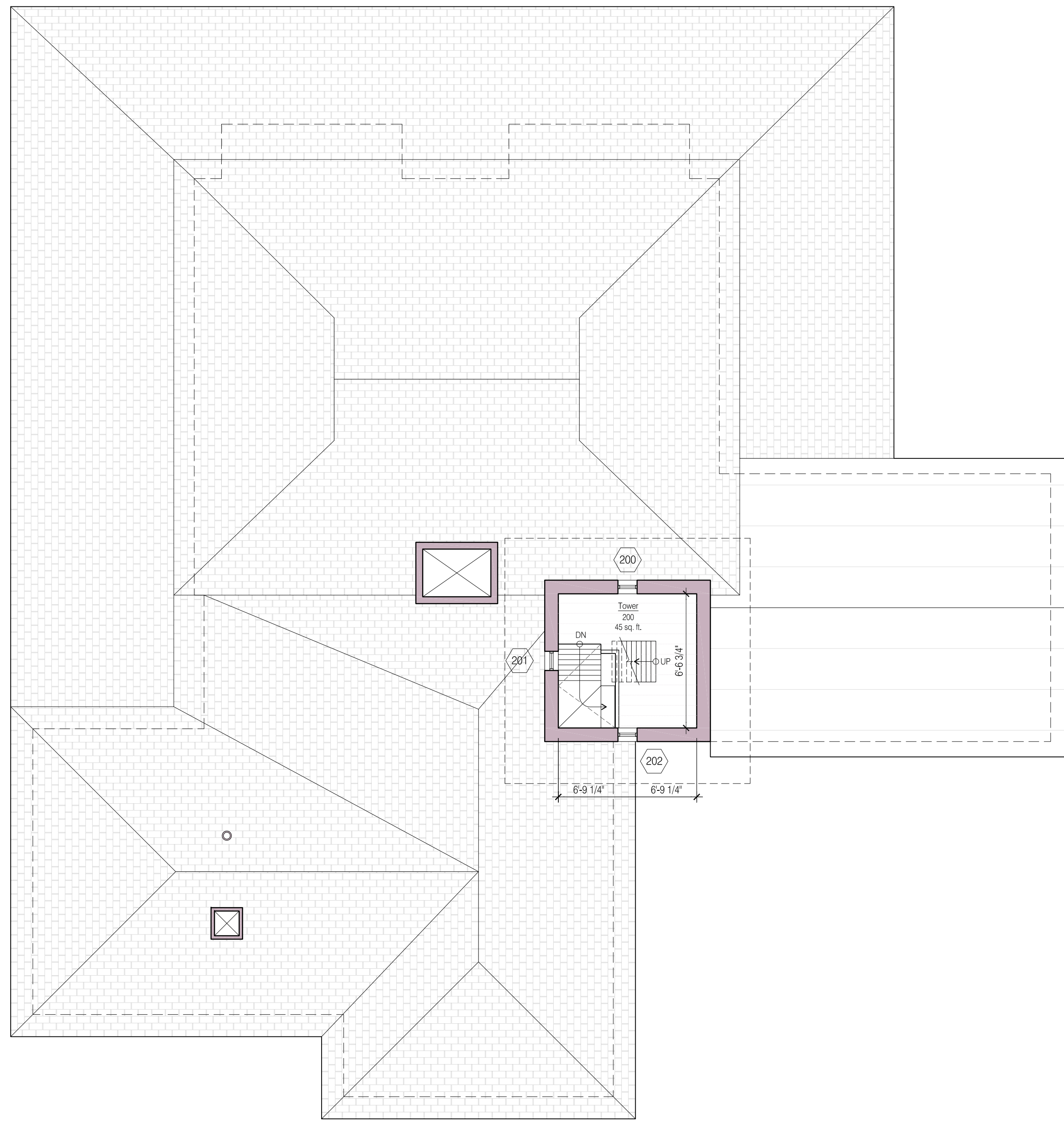
D

E

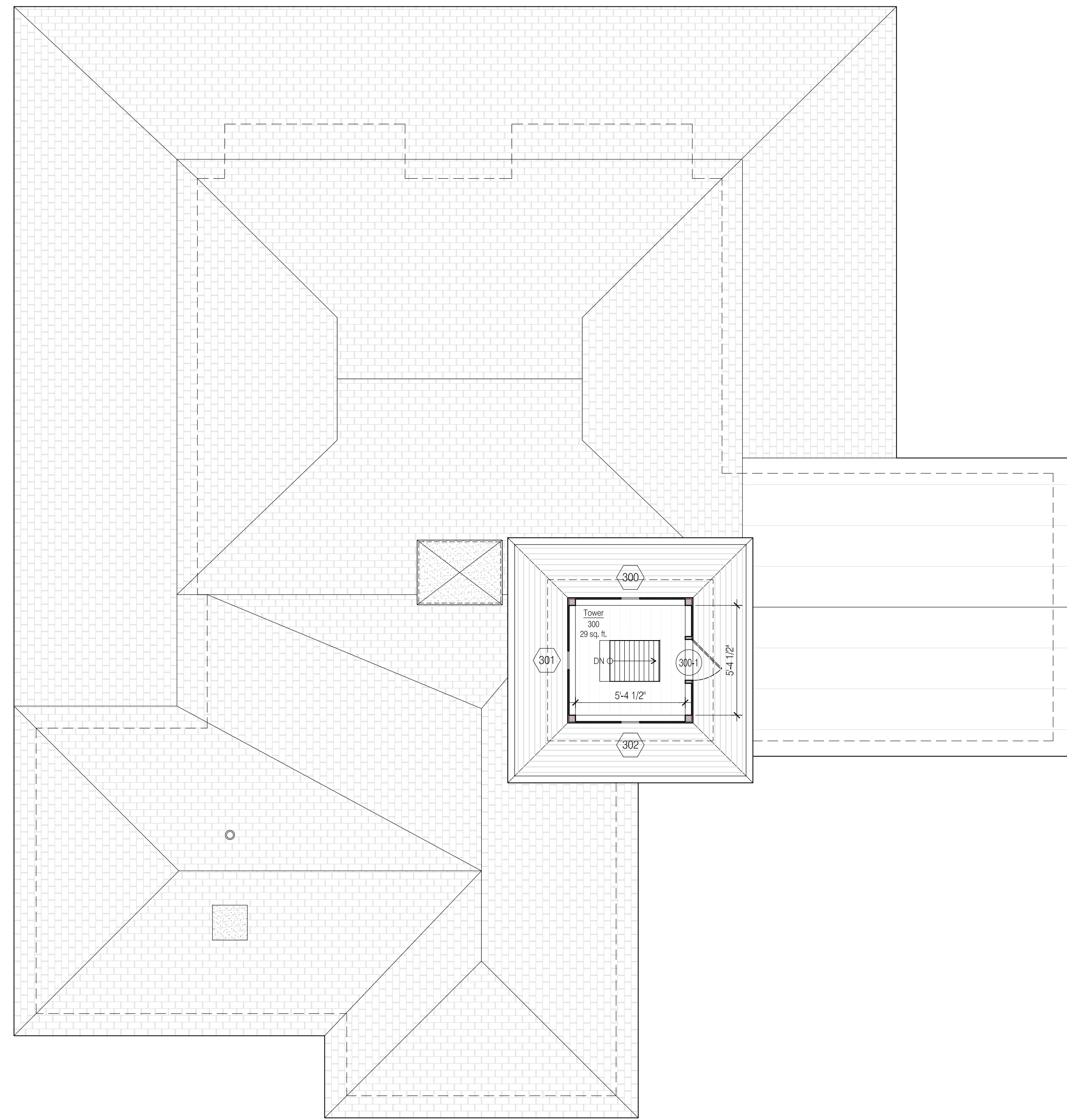
F

G

H



H1 TOWER SECOND FLOOR PLAN 1/4"=1'-0"



H6 TOWER THIRD FLOOR PLAN 1/4"=1'-0"

ANDRE TCHELISTCHEFF ARCHITECTS
560 Broadway Suite 609 New York NY 10012
Telephone 212 431 1503 Fax 212 431 1506

1. Issued for Board Review 02/07/12

Smith - Taylor Cabin
Taylor's Island
Town of Shelter Island, New York

Second Floor & Third Floor
Existing Plans

Project # 11ST10

Scale: 1/4" = 1'-0"

7 December 2011

EX1.1

