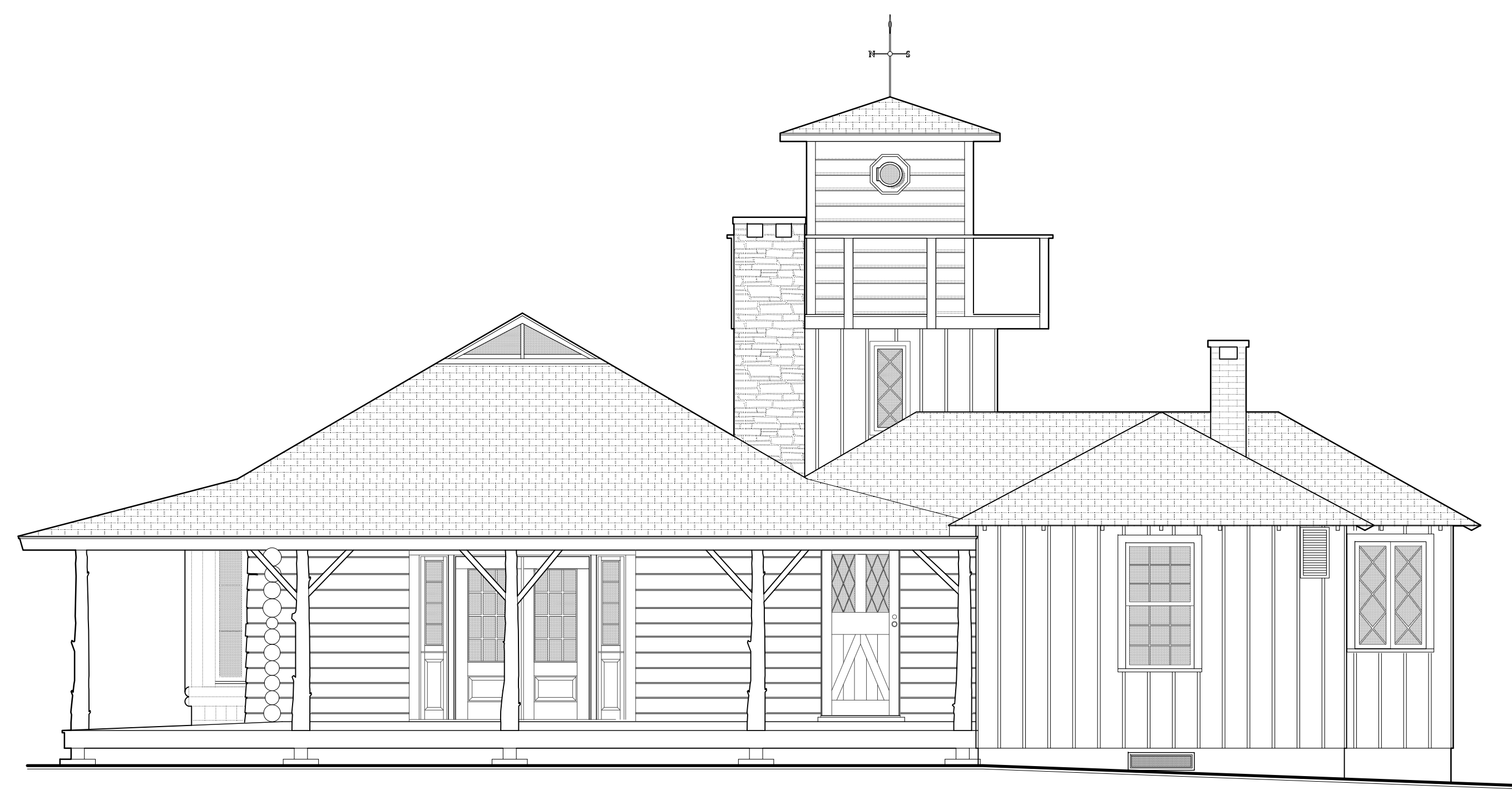
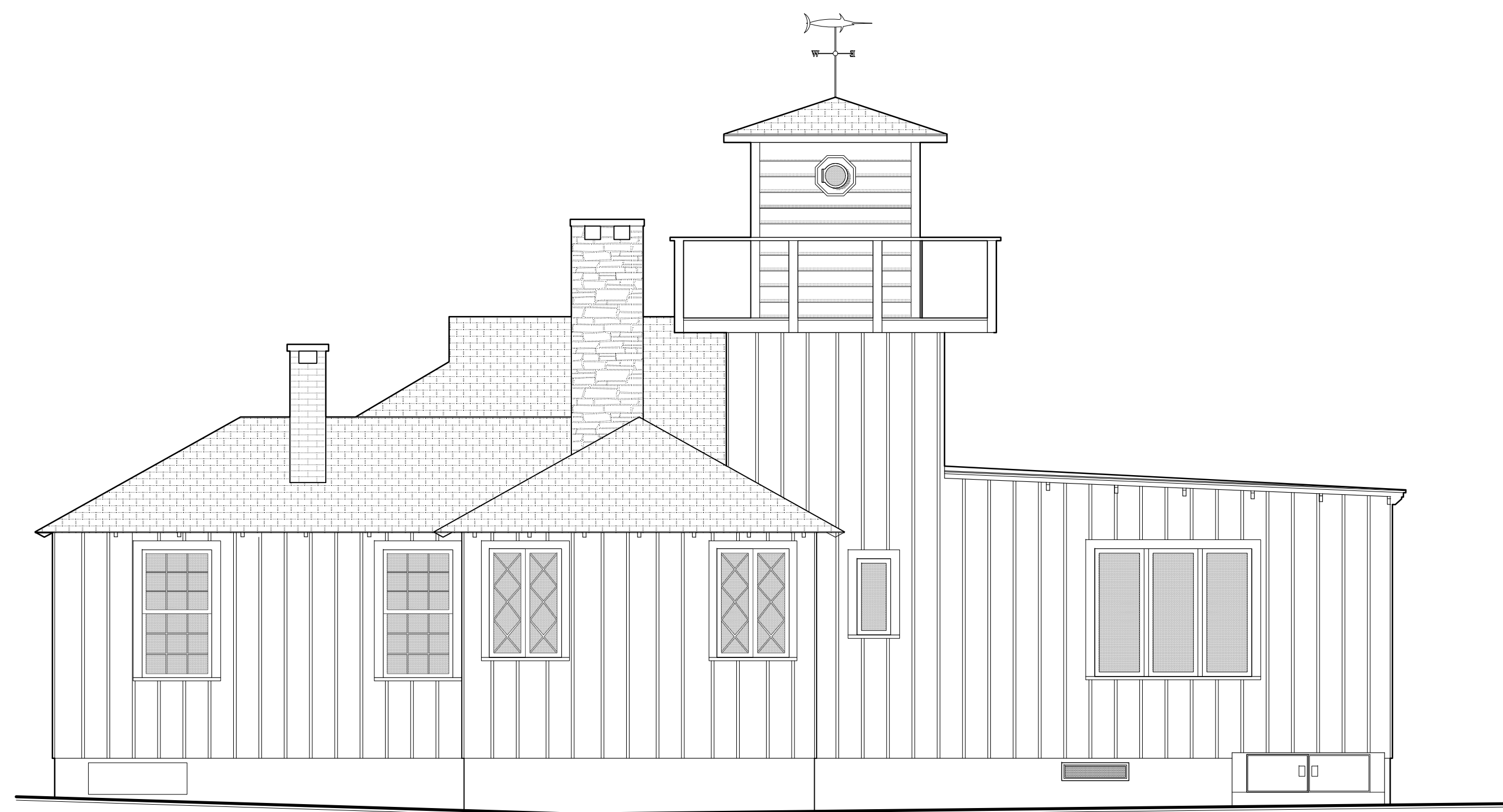


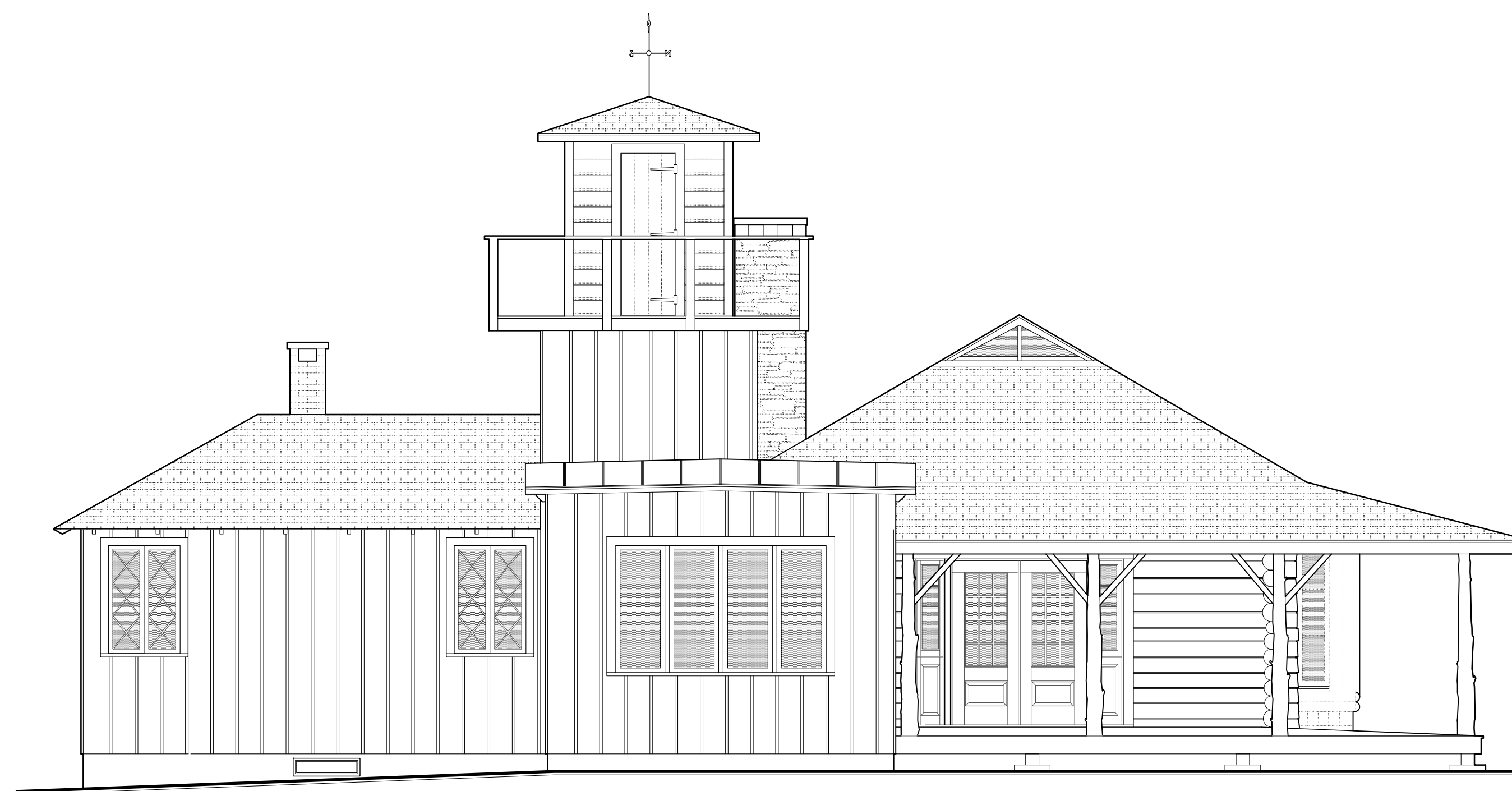
D1 NORTH ELEVATION 1/4"=1'-0"



D6 WEST ELEVATION 1/4"=1'-0"



H1 SOUTH ELEVATION 1/4"=1'-0"



H6 EAST ELEVATION 1/4"=1'-0"

ANDRE TCHELISTCHEFF ARCHITECTS
 560 Broadway Suite 609 New York NY 10012
 Telephone 212 431 1503 Fax 212 431 1506

1. Issued for Board Review 02/07/12

Smith - Taylor Cabin
 Taylor's Island
 Town of Shelter Island, New York

Exterior Elevations
 Existing Conditions

Project # 11ST10

Scale: 1/4" = 1'-0"

7 December 2011

EX2.0